



Pure Sine Wave Inverter / Charger

SN-C BT Series



SN-1000CBT
SN-1500CBT
SN-2000CBT



SN-2500CBT
SN-3000CBT



Features

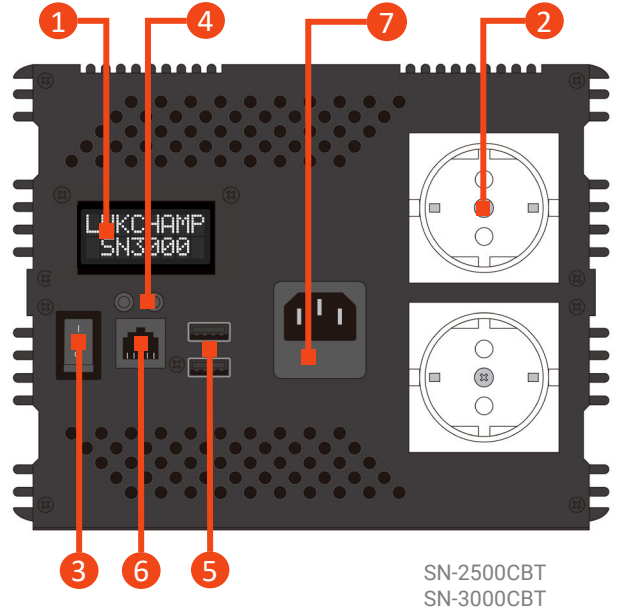
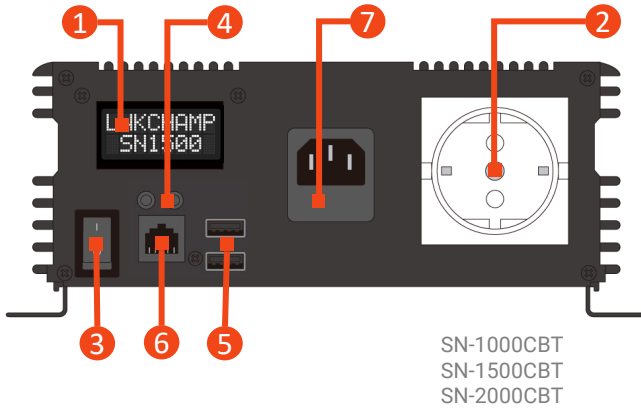
- NEW** Smartphone Connectivity
- NEW** Smart Display & Quick Charge 3.0 USB
- NEW** Settings Fully Adjustable by App
- Bi-directional Inverter and 3-Stage Charging
- Pure Sine Wave Output
- Microcontroller Integrated
- Energy Saving Mode & Intelligent Fan Control
- Input & Output Fully Isolation
- Intelligent PWM Output Regulation
- Multi Pre-Alarm & Shutdown Alarm Protections: Battery Type Detection / Polarity Reverse / Low Voltage Short Circuit / Overheat / Overload
- Aluminum Housing
- 100% Made in Taiwan

Model	SN-1000CBT		SN-1500CBT		SN-2000CBT		SN-2500CBT		SN-3000CBT	
System										
Continuous Power	1000W		1500W		2000W		2500W		3000W	
Surge Power	2000W		3000W		4000W		5000W		6000W	
Output Voltage	EU: 220/230/240 VAC (🔌 App); USA: 110/120/127 VAC (🔌 App);									
Output Waveform	Pure Sine Wave									
Total Harmonic Distortion	< 3%									
Output USB Port	Quick Charge 3.0 x 2 Ports									
Standby Current (Normal)	DC 12V	< 1.0A	< 1.2A	< 2.0A	< 2.5A					
	DC 24V	< 0.8A	< 0.9A	< 1.3A	< 1.5A					
Standby Current (Saving)	< 0.15A									
Output Regulation	< ±5% Intelligent PWM									
Output Frequency	50/60 Hz (🔌 App)									
Input Voltage	DC 12V: 10~15V; DC 24V: 20~30V									
Efficiency	> 85%									
Working Temperature	-20 ~ 40 °C; 60 °C @40% load									
Storage Temperature	-20 ~ 70 °C									
Protection										
Input Type Auto-Detection	Yes									
Input Polarity Reverse Prot.	Fuse									
Input Low Voltage Prot.	DC 12V: < 10.0V Pre-Alarm, < 09.5V Auto-off & Alarm (± 0.3V) (🔌 App) DC 24V: < 21.0V Pre-Alarm, < 19.0V Auto-off & Alarm (± 0.5V) (🔌 App)									
Input High Voltage Prot.	DC 12V: > 16V Auto-off & Alarm (± 0.5V) DC 24V: > 32V Auto-off & Alarm (± 1.0V)									
Short Circuit Protection	Yes									
RCD (GFCI) Protection	Optional									
Overheat Protection	> 70°C ~ 90°C Pre-Alarm, > 75°C ~ 95°C Auto-off & Alarm (🔌 App)									
Overload	Pre-Alarm	> 80% ~ 110% (🔌 App)								
	Auto-off & Alarm	> 90% ~ 120% (🔌 App)								
Cooling	Intelligent Fan / Force Cooling (🔌 App)									
Mechanical										
Fuse	DC 12V	25A x 6PCS	25A x 7PCS	30A x 8PCS	25A x 12PCS	25A x 14PCS				
	DC 24V	15A x 6PCS	15A x 7PCS	15A x 8PCS	15A x 12PCS	15A x 14PCS				
AC Outlets	EU: 1; USA: 1				EU: 2; USA: 2 (GFCI optional)					
Dimension (LxWxH) (mm)	430 x 227 x 88		430 x 227 x 88		525 x 227 x 88		430 x 200 x 157		525 x 200 x 157	
Net Weight	5.2 kg		5.4 kg		7.8 kg		10.0 kg		11.0 kg	
Display	8x2 LCD (8x2 OLED optional)									
RC Accessory	RC-S-BT, RC-P-INC									
Battery Charger										
Charging Current	DC 12V	20A								
	DC 24V	10A								
Battery Full Detection	YES									
Power Auto-Switch	AC LINE -> INVERTER; INVERTER -> AC LINE									
Switching Time	AC LINE -> INVERTER: < 16ms; INVERTER -> AC LINE: < 20ms									
Note (🔌 App): Adjustable by App										



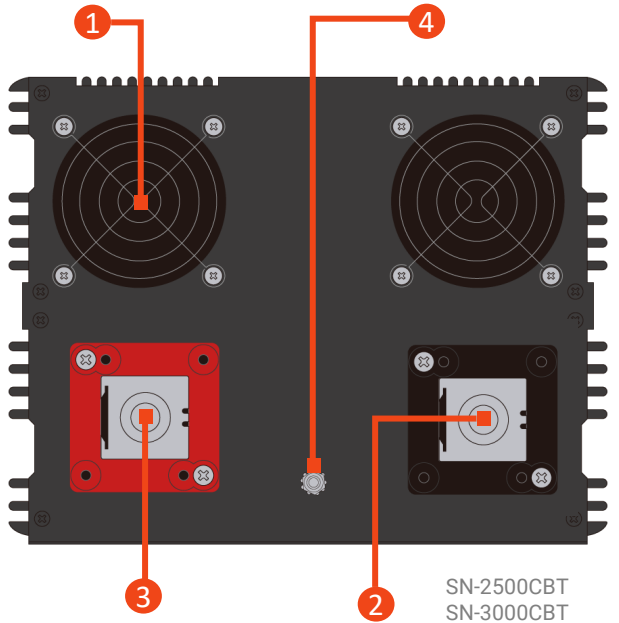
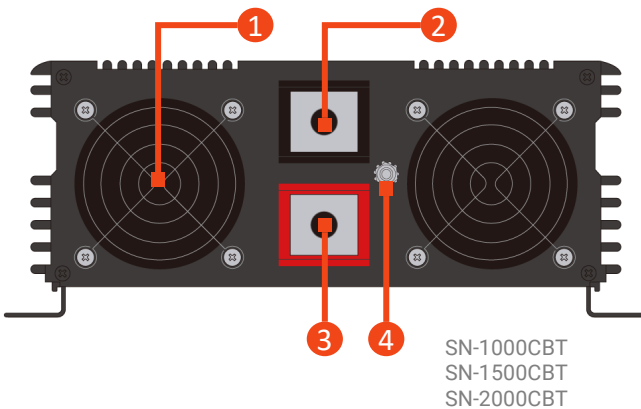
■ Front Panel

- ① 8x2 Display
- ② AC Output
- ③ Main Switch
- ④ Display Select Button
- ⑤ USB Port
- ⑥ Remote Port
- ⑦ AC Input (with Fuse)



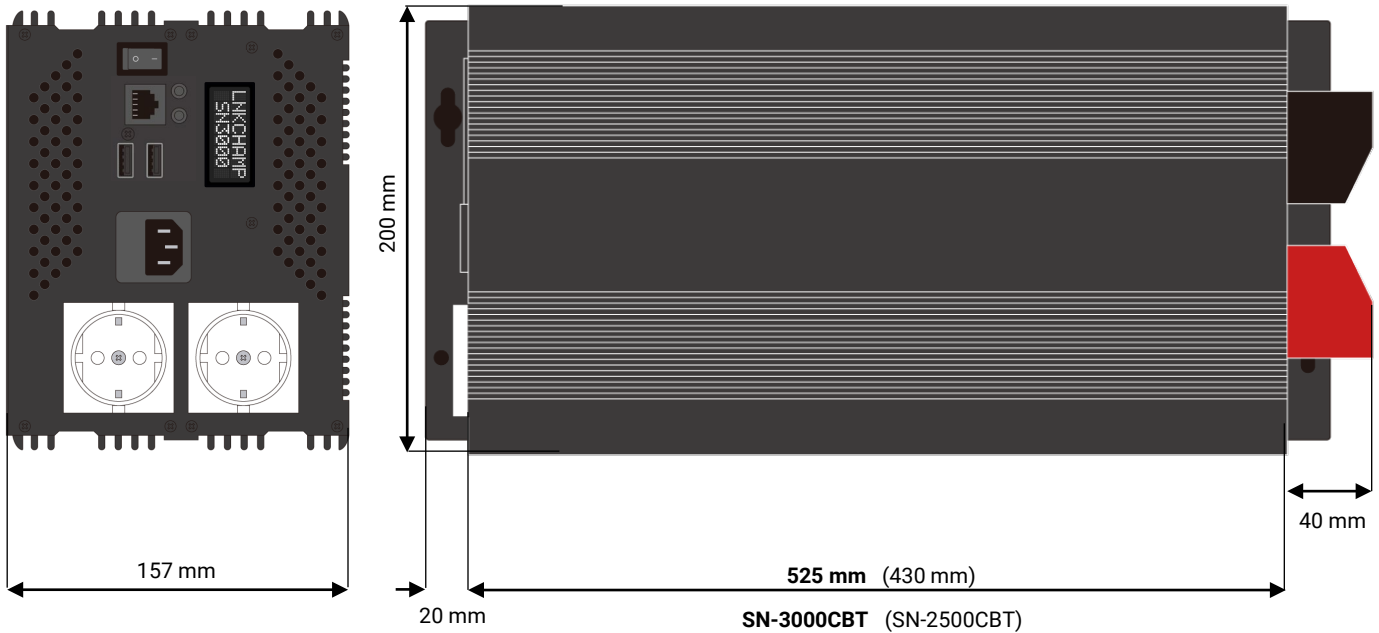
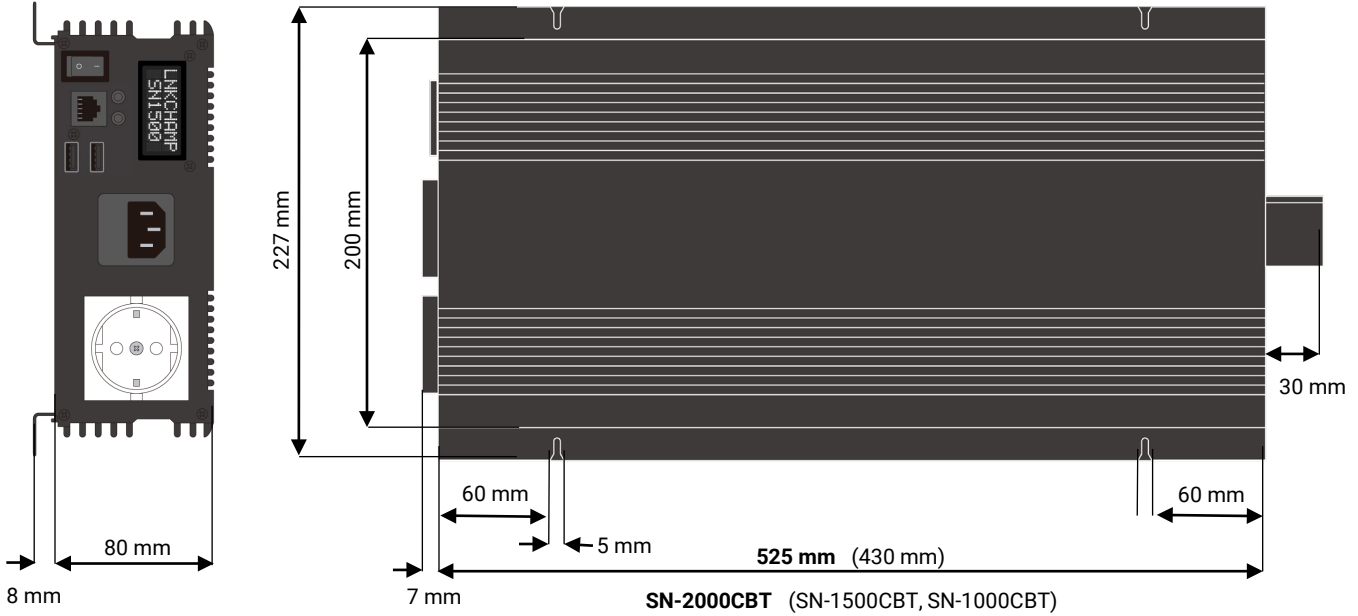
■ Rear Panel

- ① Fan
- ② Negative Terminal
- ③ Positive Terminal
- ④ Ground Terminal





■ Mechanical Drawings





8x2 Smart Display

MENU

Page 01

Input Voltage: 12.5V E
Output Watts: 1500W B

Page 02

Output Hz: 50Hz E
Output Voltage: 230V B

Page 03

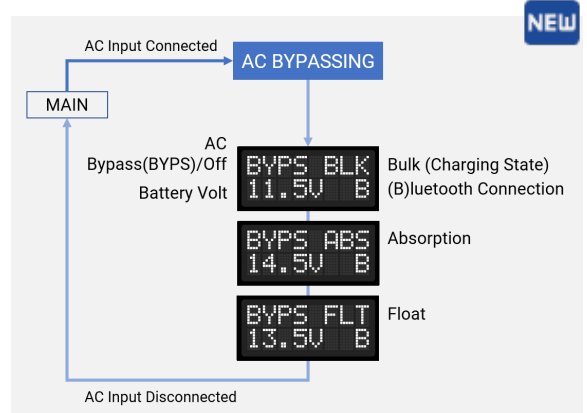
Temperature (°C): 60°C E
Timer (h / m): 00h00m B

The temperature reading from the inverter internal sensor.

Countdown timer in Hours / Minutes. 00h00m if no setup.

(E)nergy Saving / (S)tandard
Operating Mode:
Select (E) mode when using the application periodically.
Select (S) mode when using the application frequently.

(B)luetooth Connection
(B): Connected
(NONE): Waiting for connection



Smartphone Control

NEW

Real-time Device Status

Real-time Device Status

Fully Customizable Settings

Multi-Languages Support